

LESSONS LEARNED THROUGH RESEARCH PARTNERSHIP AND CAPACITY ENHANCEMENT IN INUIT NUNANGAT

Natalie Carter¹, Jackie Dawson¹, Natasha Simonee², Shirley
Tagalik³, and Gita Ljubicic⁴

¹ Department of Geography, Environment and Geomatics, University of Ottawa,

² Pond Inlet, Nunavut ³ Aqqiumavik Society, Arviat, ⁴ Department of Geography and Earth Sciences, McMaster University





uOttawa

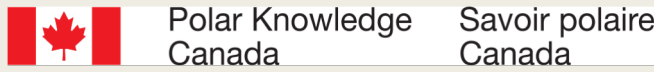
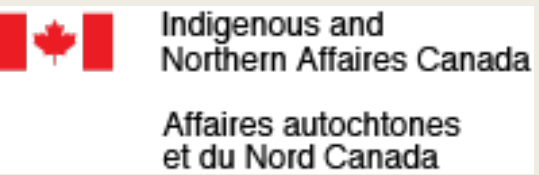
ARCTIC CORRIDORS & NORTHERN VOICES RESEARCH

Natalie Carter

Jackie Dawson, Nicolien van Luijk, Melissa Weber,
Alison Cook, Zuzanna Kochanowicz, Kayla Grey, Colleen Parker,
Jennifer Provencher, Annika Ogilvie, Jenna Joyce

Department of Geography, Environment and Geomatics
University of Ottawa

Acknowledgements





ARCTIC CORRIDORS

RESEARCH FOR POLICY ON SHIPPING GOVERNANCE IN ARCTIC CANADA

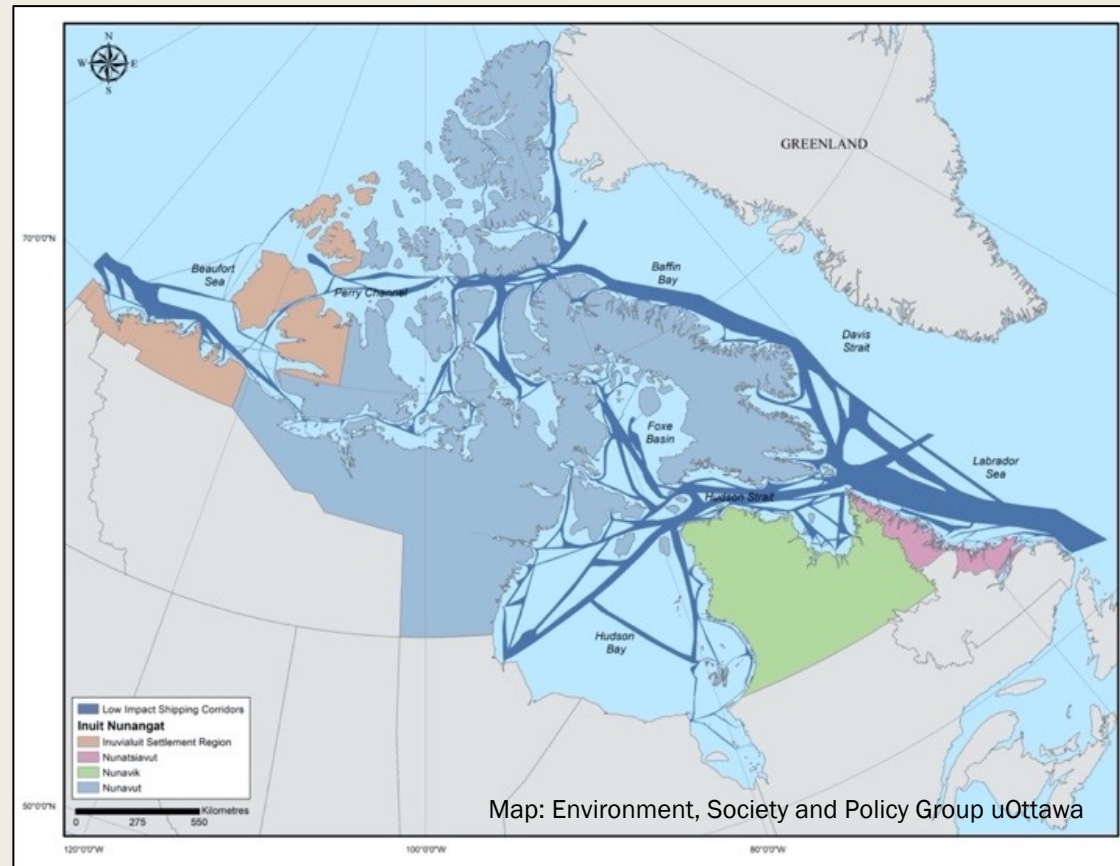
INTERACTIVE MAPS

www.arcticcorridors.ca

Low-Impact Shipping Corridors

“...while respecting the sensitive northern environment and its ecological and cultural significance”

(Transport Canada, 2017)

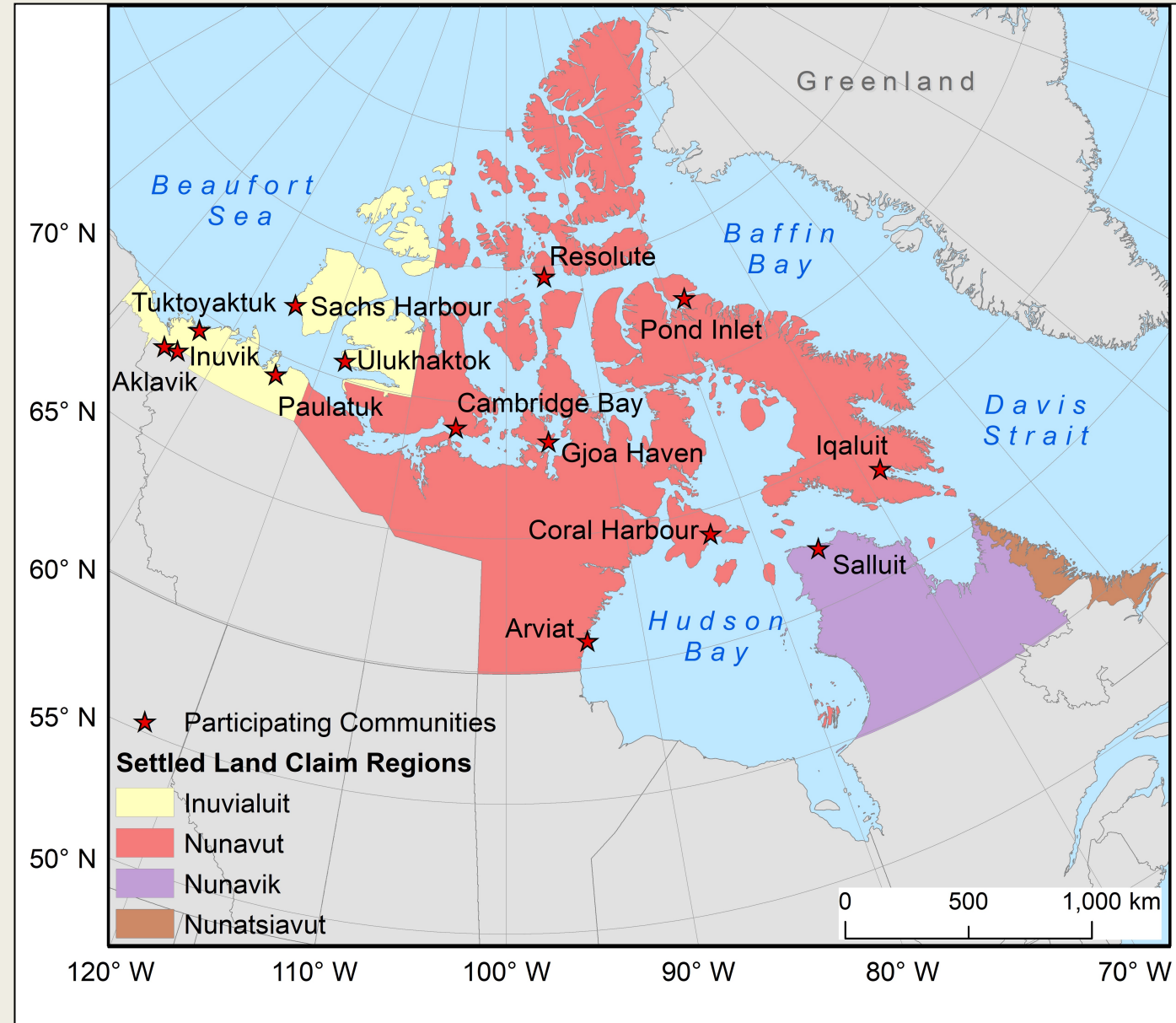


Project Goals

- Arctic shipping spatial trends database
- Concerns and opportunities, culturally significant marine areas
- Inuit- and community-identified recommendations

14 Community Workshops

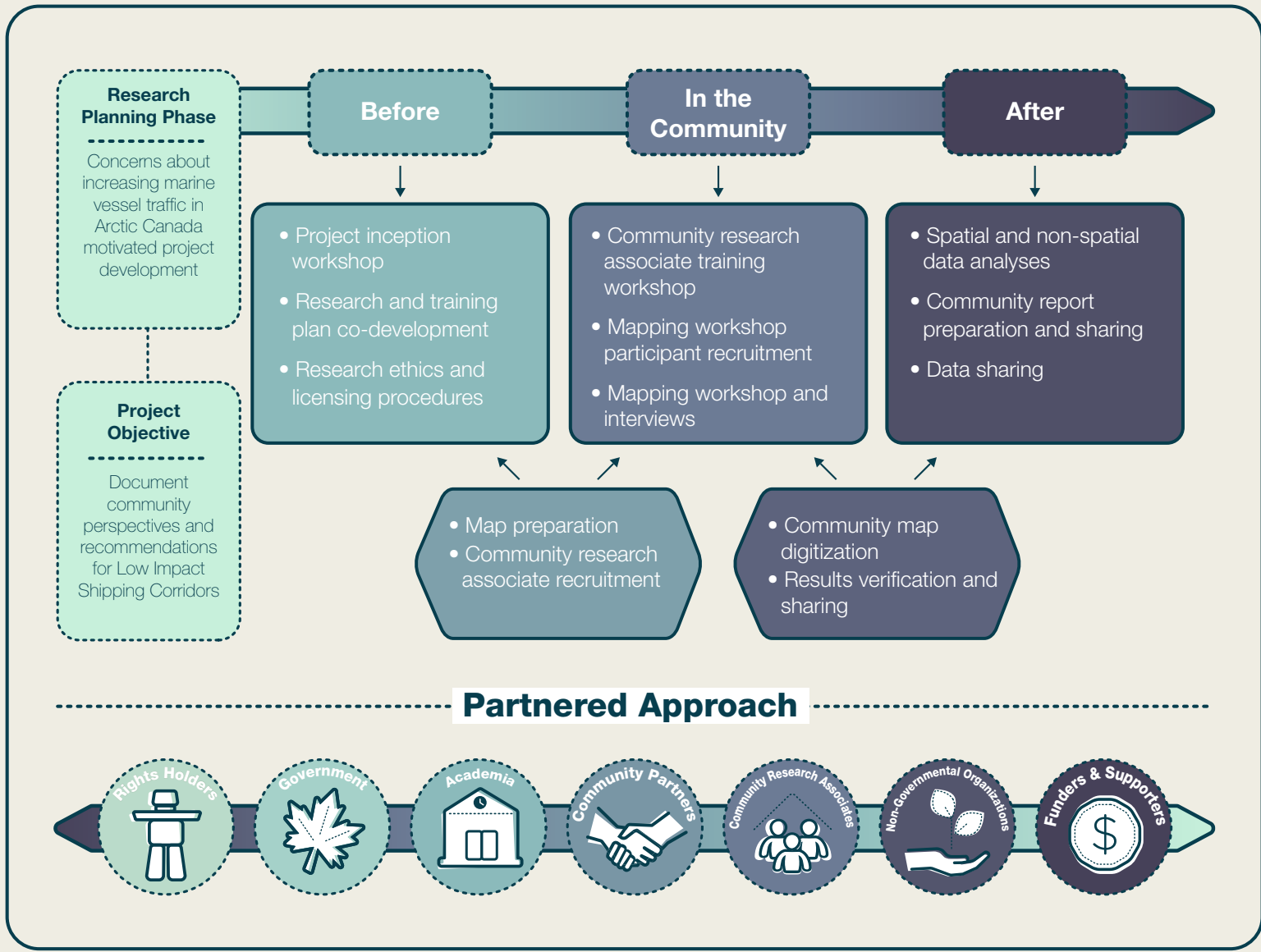
- 14 communities
- Local partners
- 59 youth cultural liaisons
- 130+ knowledge holders



14 Community Workshops

- Mapping and discussions
- Seasonal benefits, concerns, risks of marine vessel traffic
- Management recommendations





Dawson et al. (2020). Arctic corridors and northern voices project: Methods for community-based participatory mapping for low impact shipping corridors in Arctic Canada. *MethodsX*. 7,101064.

Dawson et al. (2020). Infusing Inuit and local knowledge into the low impact shipping corridors: An adaptation to increased shipping activity and climate change in Arctic Canada. *Environmental Science and Policy*, 105. 19-36.

www.arcticcorridors.ca/reports/

LESSONS LEARNED THROUGH RESEARCH PARTNERSHIP AND CAPACITY ENHANCEMENT IN INUIT NUNANGAT

Natalie Carter¹, Jackie Dawson¹, Natasha Simonee², Shirley
Tagalik³, and Gita Ljubicic⁴

¹ Department of Geography, Environment and Geomatics, University of Ottawa,

² Pond Inlet, Nunavut ³ Aqqiumavik Society, Arviat, ⁴ Department of Geography and Earth Sciences, McMaster University





Carter, N.A., Dawson, J., Simonee, N., Tagalik, S., and Ljubicic, G. (2019). Lessons learned through research partnership and capacity enhancement in Inuit Nunangat. *Arctic*. 72(4):381-403.

“Any Arctic strategy worth pursuing must put working with Inuit at its heart, not at the periphery.”

"ᐅᐱᐅᑦᐅᑦᐅᑦᐅᑦ ᐅᐅᐅᑦᐅᑦᐅᑦ ᐅᐅᐅᑦᐅᑦᐅᑦ ᐅᐅᐅᑦᐅᑦᐅᑦᐅᑦᐅᑦ"

- *With*, not *on* Inuit
- Involve those most affected
- Address Inuit priorities
- Two-way relationship
- Co-learning



- Mary Simon ᐅᐅᐅ ᐅᐅᐅᑦ

Former president of ITK and MSR on Arctic Leadership

1. Relevant to Local Needs & Interests

- Motivated
- Personal reflections
- Engaged, detailed, extensive
- High participation rate



“This is fun sitting around debating this stuff”

- Pond Inlet ACNV Participant

- Local needs and interests + visiting researchers' interests addressed
- Urgency for change
- Realistic timelines



3. Youth Cultural Liaisons and Co-facilitators

- Cultural insights
- Advice
- Question refinement
- Intergenerational knowledge exchange



Impacts of shipping ~~in~~ in the corridors

- local tourism / guiding
- loss of life due to moving ice
- loss of equipment / supplies
- more Search + Rescue
- more stranded hunters
- local economy - sale of tusk, ~~made~~ taag
- resupply summer camps
- food security

- (Intersecting) topics
- Discussed availability and adjusted
- Participants' expectations
- Interpreters

4. Conducting Results Validation & Sharing Exercises

- Accurate, comprehensive
- Respect, reciprocity
- Confirm data and privacy
- Credit or anonymity



- Offer to share in group or individually
- Some may not participate.
- Discuss appropriate remuneration (\$)



Conclusion

- Time (3 weeks)
- Funding (\$1.5M)
- Robust results
- North-south relations
- Community capacity

